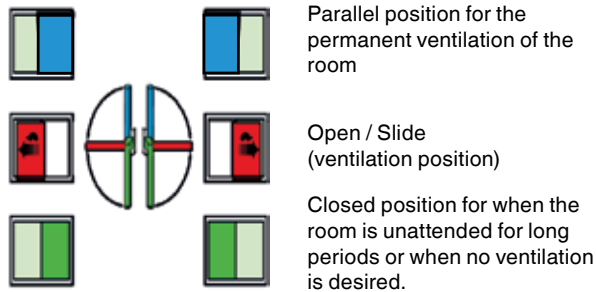


Details of product liability

- Your windows or doors are equipped with a high-quality **Parallel Sliding Door System (PAS)**. The handling is easy and problem-free, nevertheless you should read these instructions very carefully and follow the notes of operation. For your own interest: please do not forget to read the 'risks and failure' notes!
- Keep these operations and maintenance instructions and inform other users about the contents of these instructions.
- Check whether the operation sticker is present within the packaging.
- Please take due care of the product and follow maintenance instructions to enjoy an enduring high quality PAS system.

Operation

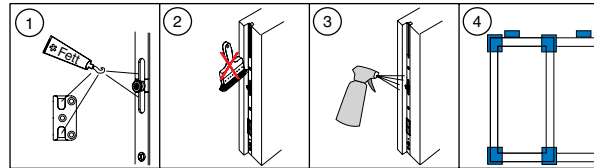


General tips for your windows

A good window can be more than a means of letting in air and light: It is an aesthetic element and simultaneously a component on which high technical demands are placed upon it. Intermittently check fittings, surface integrity, glazing and gaskets, and repair any defects found immediately.

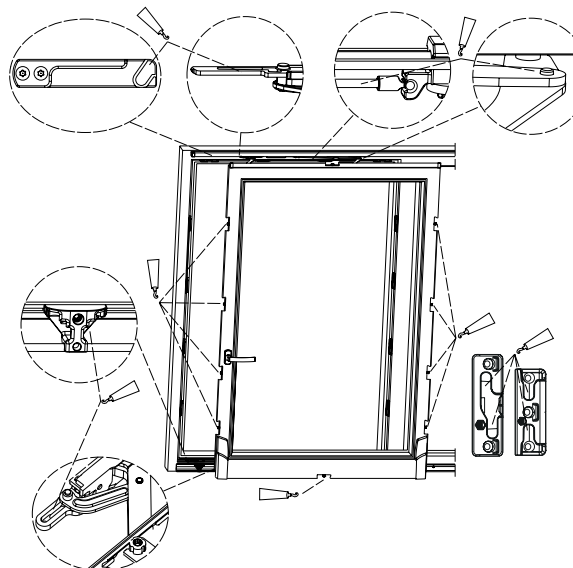
Details of operation / maintenance

The following maintenance work has to be carried out every year so that the function of the **Parallel Sliding Door System (PAS)** can be preserved.

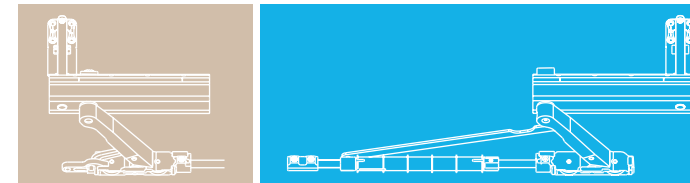


1. Grease all moving parts and contact surfaces.
Do not use: lubricating oils, rust dissolver silicone sprays etc.! Grease only with lubricating grease or technical Vaseline!
2. Do not paint fittings!
3. Only use cleaning and care products which don't affect the anti-corrosive protection of the fittings!
4. Check security-relevant fittings for wear at regular intervals! ■

Lubrication points



MACO
RAIL-SYSTEMS
SLIDING HARDWARE



Parallel Sliding Door System

Details of risks and failure



Risk of injury by catching hands or fingers in opening gap between the sash and frame



Risk of injury by falling out of open windows or patio doors



Risk of injury through obstructing the PAS systems intended movement

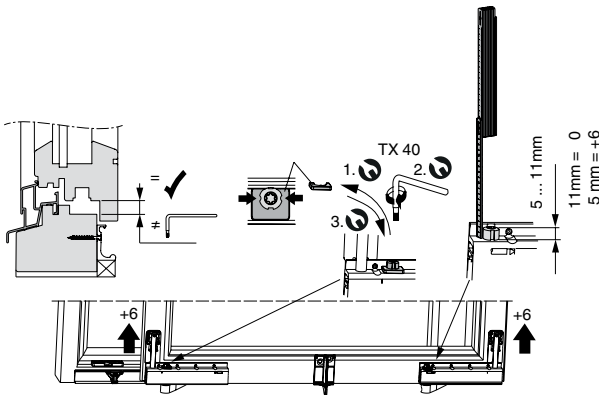


Risk of injury and property damage by exceeding recommended tolerances

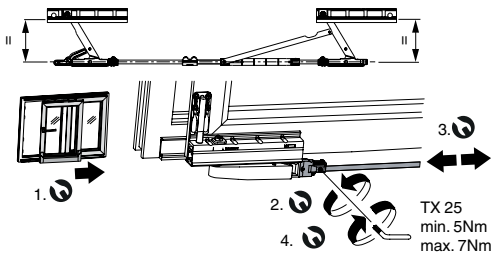
Adjustment work on the sash

Adjustment work as well as the clipping in and out of the sash has to be carried out by authorized experts only.

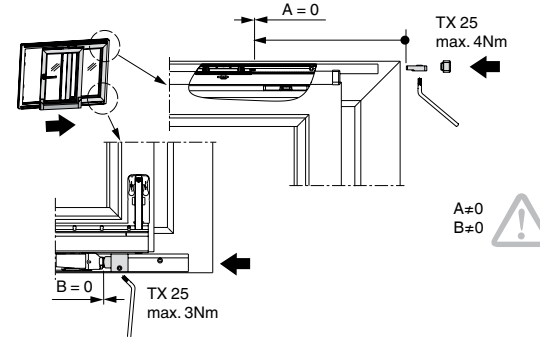
Horizontal adjustment of sash



Parallel Adjustment of running gear

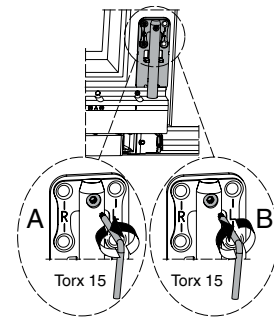


Adjustment of fittings

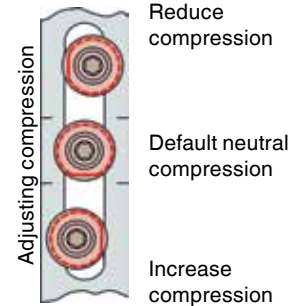


Adjustment of reinforcement parts

A - Releases compression
B - Adds compression



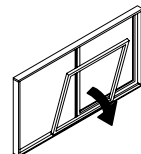
Adjustment of compression



Clipping in or out of Casement

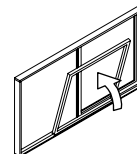
Special attention must be paid to the following instructions by the installer because the assembly is no longer the fitting manufacturer's responsibility beyond this point!

Clipping in

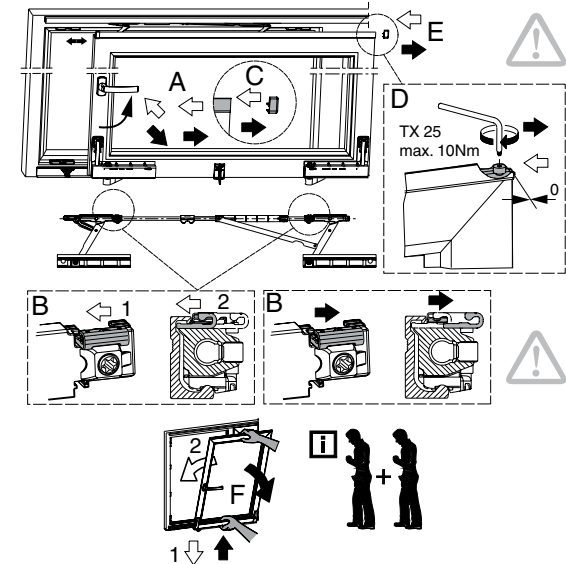


A - B - C - D - E - F

Clipping Out



F - E - D - C - B - A



Activate the leverage protector (anti-jemmy)!
Slide (1) until the two running gears behind clicks in the highlighted position (2).

ATTENTION:

If the leverage-protector is clicked in wrongly or not at all the casement isn't safeguarded sufficiently.
Major bodily injuries could happen.

We recommend that buyers of window and door elements have the installation and assembly of the elements carried out by authorized experts.

The same care and maintenance notes also apply to all window types which are not mentioned in this instruction (e.g. tilt and slide window, scheme C)!

MAYER & CO BESCHLÄGE GMBH
ALPENSTRASSE 173
A-5020 SALZBURG
TEL +43 (0)662 6196-0
FAX +43 (0)662 6196-1449
E-Mail: maco@maco.at
www.maco.at

MACO DOOR & WINDOW
HARDWARE(U.K.) LTD
EUROLINK INDUSTRIAL
CENTRE CASTLE ROAD
SITTINGBOURNE KENT ME10 3LY
TEL +44 (0)1795 433900
FAX +44 (0)1795 433902
enquiry@macouk.net
www.macouk.net

Order No. 756910_EN
Date: November 2012
All rights reserved and subject to change.