

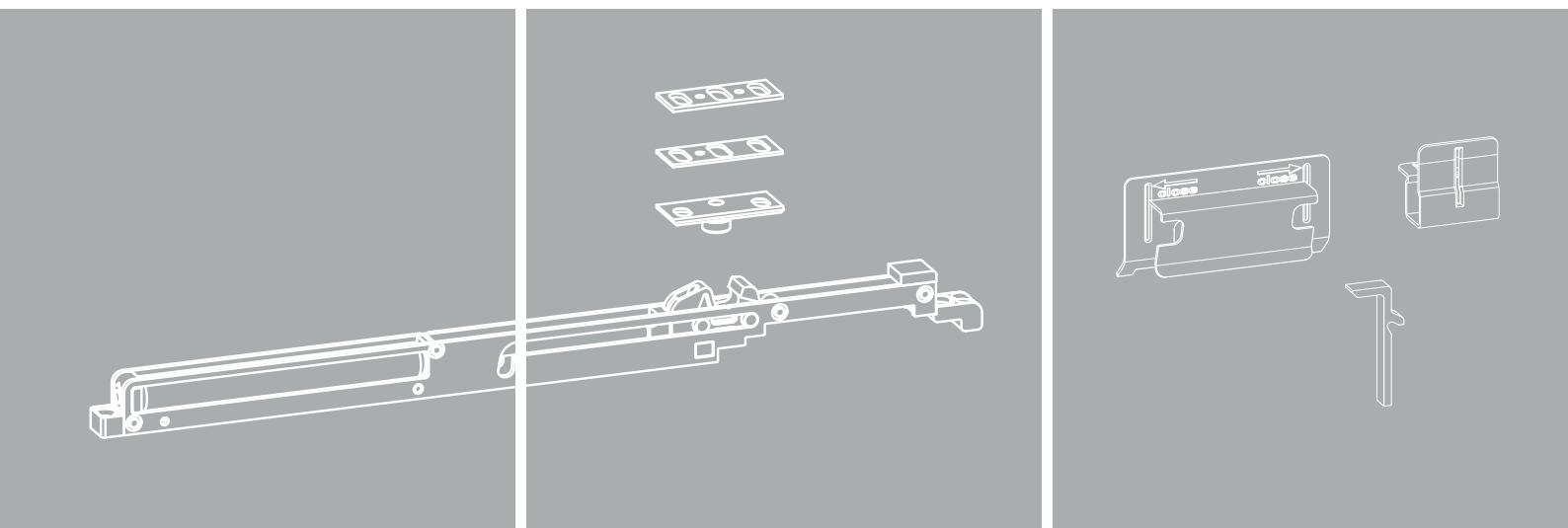
Only for use by specialist companies!



Read thoroughly before use/installation!
Keep for future reference!

Move PS

Parallel slide fitting



Installation instructions

Comfort Close - closing damper with retraction mechanism

Legends and abbreviations

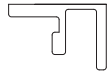
	FS	Guide rail
---	----	------------

Table of contents

Legends and abbreviations	2
Notes for using these installation instructions.....	4
Safety and warning notices	6
Product description	7
Intended use.....	7
Application areas	7
Technical data	8
Dimensions	8
Material notes.....	9
Notes for the processing.....	9
General processing notes.....	9
Notes on screw connection of fitting parts.....	11
Overview of fitting parts and drilling templates	12
Fastening screws for the fitting parts	12
Installation of the Comfort Close.....	13
Installation of sash elements	17
Maintenance instructions	17
Troubleshooting.....	17
Storage, transport, disposal.....	18
Notes.....	19

Notes for using these installation instructions

Introduction

- › Read these instructions through carefully before starting installation. Install all fitting parts correctly as described in these instructions and observe all safety instructions.
- › Failure to follow these instructions will void any warranty for the proper functioning of the element or system. We accept no liability for injury to people, or damage to materials or property in the event of non-compliance. This will lead to the cancellation of all liability, warranty and any separately agreed guarantee claims.

Target group

- › This documentation is intended exclusively for specialist companies and trained specialist personnel (e.g. carpenters, metalworkers for construction technology, window and glass façade builders).
- › The work described must only be carried out by qualified personnel! This applies in particular to electrical work!

Usage instructions

- › This print document is constantly being revised and the current version is available for download at <https://www.hautau.de/downloads>. A QR code and the creation date can be found on the back of this document.
- › All illustrations are symbolic only.
- › Unless otherwise stated, dimensions are given in **millimetres**.
- › Further technical documentation can be found on our website www.hautau.de.
- › Misprints, errors and changes are reserved.
- › Please send any suggestions or ideas for improving our instructions by email to info@hautau.de.

Protective note on the restriction of the use of documents in accordance with ISO 16016:

© Mayer & Co Beschläge GmbH.

Applicable documents

The following documents must be observed in addition to these instructions and/or provide additional information:

- › [Our General Terms and Conditions \(GTC\)](#)
- › [Profile-related installation instructions Move PS](#)
- › [Fittings guideline for windows and French windows - Specifications and instructions for end users \(VHBE\)](#)
Quality Association for Locks and Fittings (Gütegemeinschaft Schlösser und Beschläge) -
(guetegemeinschaft-schloss-beschlag.de)
- › [Fittings guideline for windows and French windows - Specifications/instructions on the product and liability \(VHBH\)](#)
Quality Association for Locks and Fittings (Gütegemeinschaft Schlösser und Beschläge) -
(guetegemeinschaft-schloss-beschlag.de)

You can find the current version of our documents on our website at <https://www.hautau.de/downloads>.

Duty to inform of the element manufacturer

Please note your duty to inform the end user! The complete delivery of a sliding element also includes operating and maintenance instructions and, if necessary, a sticker for different operating modes! We make these available to our customers in the download area of our website <https://www.hautau.de/downloads>.

Retention of documents



Keep these installation instructions for future reference.

Safety and warning notices

For the safety of personnel, this document contains safety instructions in the following 3 stages:



Failure to comply with such instructions will result in fatal or serious injury!



Failure to comply with such instructions may result in fatal or serious injury!



Failure to comply with such instructions may result in minor or slight injuries!

In addition, areas that require special attention in order to avoid material damage or errors are labelled as follows:



Note to avoid material damage or errors when installing the fitting parts on the element.

Product description

Intended use

Used for closing horizontally sliding Move PS sashes. The sash is automatically pulled into the closed position approx. 100 mm before the main closing edge is reached. Also see technical data.

The static dimensioning of the element system is the responsibility of the element manufacturer.

Application areas

- › The specified maximum application areas and sash weights for the individual fitting designs must not be exceeded. The component with the lowest permissible load-bearing capacity determines the maximum sash weight. Application diagrams and component assignments must be observed!



DANGER

Mortal danger due to falling window sashes!

If the specified application areas are exceeded, the sash may detach from the frame.

- › Always adhere to the specified areas of application!

- › You must also comply with the information on application areas, sash weights and processing guidelines of the profile manufacturer or system provider!
- › The centre of gravity or position of the glass pane can influence the areas of application and maximum weights. If necessary, enquire about the areas of application and maximum weights!

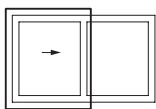
Profile materials

The Comfort Close closing fitting is designed for plastic sliding sashes.

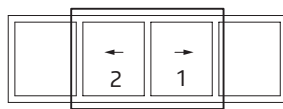
Sash shape and number of sashes

- › The Comfort Close for Move PS is only suitable for rectangular sliding sashes with the following schemes:

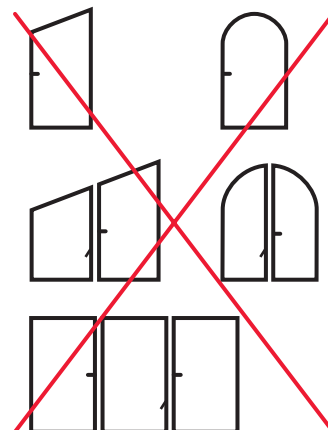
Scheme A



Scheme C



- › The Comfort sliding fitting is not suitable for slanted and arched windows.
- › It is not suitable for windows and French windows.



Technical data

Sash width (FB) 900 – 2000 mm

Sash weight max. 250 kg

or service life sliding forces with sash weight 200 kg in accordance with DIN EN 12046 - 1 (classification in accordance with DIN EN 13115).

Depending on the system used, the sash may not retract automatically into the end position if the sliding speed is too low or if it is stopped manually.

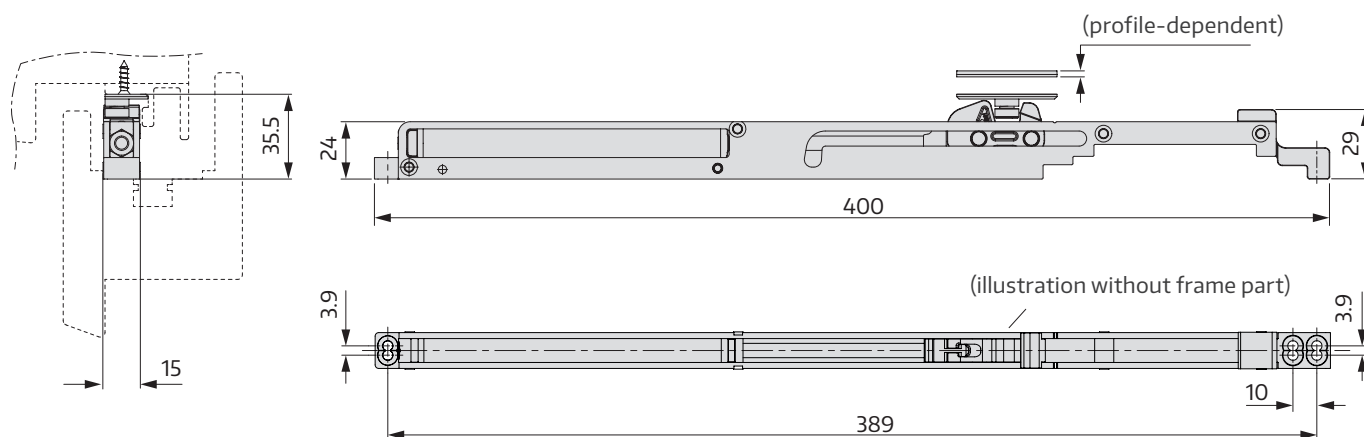
Soft closing starting approx. 100 mm in front of the closing edge

Note: Using the Comfort Close results in an increase in the opening/sliding forces.

Depending on the profile system used, there may be different areas of application.

The profile manufacturer's specifications must always be observed.

Dimensions



Material notes



Please note the following information on the material of the fittings.
Otherwise, the fittings may be damaged.
In addition, all warranty claims may be invalidated!

- › The steel fitting parts described in these instructions are galvanised, passivated and sealed in accordance with EN ISO 2081:2018. They must not be used in environments with aggressive, corrosive air contents (e.g. in swimming pools, stables, buildings near the coast, polluted industrial areas, buildings for processing in the chemical industry, etc.). The fittings are also not suitable or intended for use in acidic timbers (oak, larch, teak, etc.) and timbers with aggressive ingredients/surface treatments. HAUTAU offers fitting parts with a Tricoat-Evo surface for these applications.
- › For the use of fittings in demanding environments and materials, please contact your HAUTAU contact person.
- › Do not use acid-treated sealants, as these lead to corrosion of the fitting parts.
- › The sliding elements may only be surface-treated before the fitting parts are installed (painting, varnishing, glazing, oiling, etc.). Subsequent surface treatment can restrict the function of the fitting parts. In this case, all warranty claims against the fitting manufacturer are void.
- › The surface of the fitting parts may not be damaged during processing. After a while, this leads to white or red rust, which destroys the components. Damaged parts must be replaced.

Notes for the processing

General processing notes



Mortal danger due to falling window sashes!
Please note the following points!



If you do not observe the following points, your liability, warranty and any separately agreed guarantee claims will also become invalid.

- › Ensure that the fitting parts are in perfect condition before installation. Damaged or defective components must not be used under any circumstances!
- › Damaged fitting parts may not be repaired under any circumstances!
- › Do not make any changes to the fitting parts!
- › The combination of fitting parts is only permitted in the manner shown and described!

- › The respective complete fitting may only consist of the specified HAUTAU fitting parts, or the specifically approved system accessories. The fitting combinations may not be modified, extended or restricted. No liability is accepted for the use of combinations not approved by the factory and/or the use of non-original or non-approved accessories!
- › Improper installation, non-conforming or unusual use, the use of system accessories not expressly approved by HAUTAU, modifications or repair work not expressly authorised by HAUTAU and improper servicing can lead to functional faults and must be avoided! In addition, liability can then no longer be accepted.
- › Any measures not expressly authorised by HAUTAU shall result in the cancellation of all liability, warranty and any separately agreed guarantee claims.
- › HAUTAU expressly emphasises that large sash loads are moved and accelerated during opening and closing. It is at the discretion and responsibility of the respective manufacturer (window fabricator), installer and dealer of sliding sashes to offer appropriate movement limiters or similar devices.
- › The resistance to wind loads in the closed and locked state depends on the respective designs of the sliding sashes. If wind loads in accordance with DIN EN 12210 (in particular test pressure p₃) must be borne, suitable fitting combinations must be agreed in conjunction with the respective window construction and the frame material and agreed separately. If in doubt, please consult your HAUTAU contact person!
- › The HAUTAU fittings listed in the installation instructions are tested and regularly monitored in standardised standard tests in accordance with EN 13126. However, the class H3 achieved according to the standard does not refer to the individual element system. Due to various influencing factors, individual element systems may deviate slightly from the standardised norm test, e.g. due to
 - › the influence of processing tolerances
 - › the effect of installation tolerances after installation of the element in the building structure
 - › the use of accessories (e.g. seals, sealing rails, handles, etc.)
 - › the use of additional equipment and/or add-on parts (e.g. aluminium shells, sun protection on the sash, insect screens)
 - › external environmental influences (e.g. humidity, solar radiation, high and low temperatures, temperature fluctuations, etc.)
 - › influences from the room (moisture, aggressive cleaning agents), etc.
- › If excessive demands cannot be excluded due to the place of use (e.g. in schools, nursery schools, childcare centres, public buildings, ...), this must be prevented by suitable measures! In the case of sliding elements, this can be done, for example, by moving the stop buffer to reduce the opening width of sliding elements.

Notes on screw connection of fitting parts



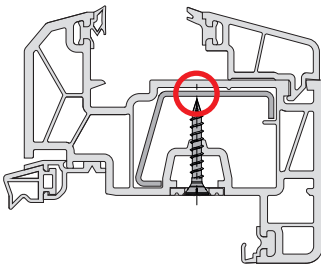
DANGER

Mortal danger!

If the window sash or other parts of the element are not adequately secured, they may come loose.

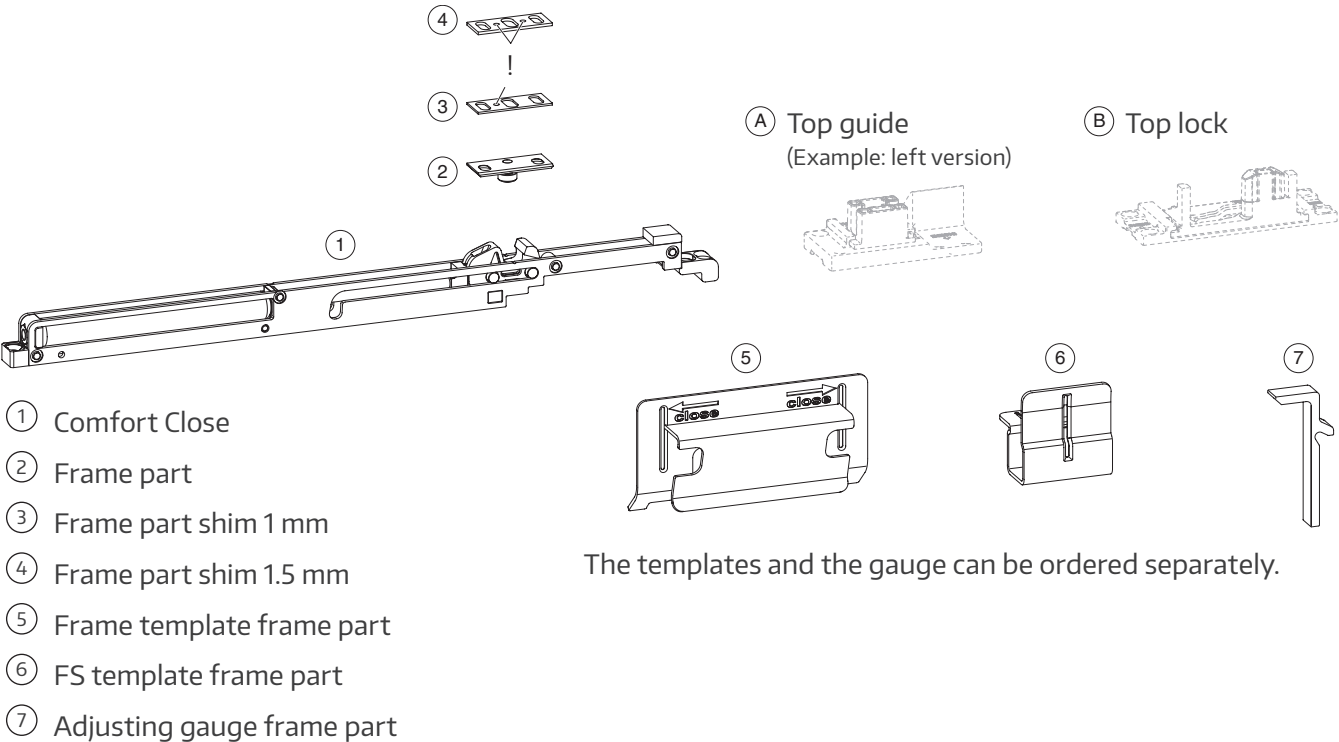
- › Pre-drill the screw holes. If possible, use gauges in accordance with these instructions.
- › Special window construction screws for the various sash materials are available for the screw connection of the fitting parts. Use them.
- › When selecting the screw dimension, please note that the thread diameter must not exceed 4.2 mm and the head diameter must not exceed 7.0 mm.
- › Use the longest possible screws. However, match the length of the screws to the sash profile used. The tip of the screw must never protrude into the glazing rebate. In the case of plastic profiles, the design and position of the reinforcement must be observed.

Plastic profiles



- › The maximum torque depends on the profile and material used and must be determined by testing. The only exceptions to this are specific HAUTAU specifications! If there are specifications for screw-in speeds and/or torques, these are binding! Overtightening the screws must be avoided, as otherwise the holding forces of the screws are reduced and they may tear out under load!
- › Unless otherwise specified, all screws must be screwed in vertically. For angled screw connections, an angle of approx. 15°-25° must be maintained!
- › Screws for load-bearing fitting parts are security-relevant and must comply with the TBDK guidelines from Gütegemeinschaft Schlösser und Beschläge (Quality Association for Locks and Fittings - www.schlossindustrie.de) or EN 13126-8! The long-term functionality and thus the operating safety depend on it, which is why this fastening is particularly important!
- › The element manufacturer is responsible for fastening the fitting parts and this must be carried out in accordance with the applicable standards. Only specific instructions from HAUTAU are excluded from this!

Overview of fitting parts and drilling templates



Fastening screws for the fitting parts

(not included in scope of delivery)

for ...	Amount	Size	Drive
Comfort Close	2	4.0 x 22 ^{1) 2)}	any
Frame part	2	4.0 x 22 ²⁾	

¹⁾ longer, if necessary, so that they reach into the reinforcement

²⁾ alternatively: self-tapping screws with countersunk head 3.9 x 25

Installation of the Comfort Close Example: Scheme A (scheme C correspondingly)

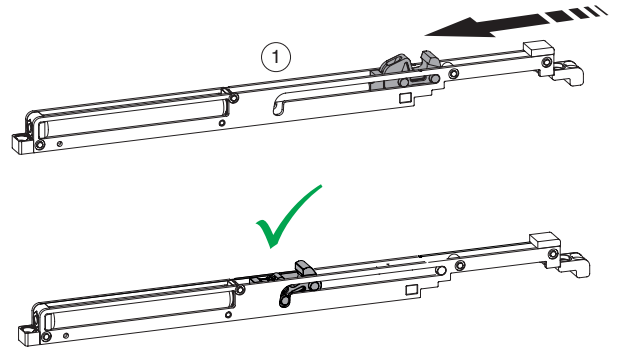
› Pretension Comfort Close



WARNING

Risk of injury due to the driver recoiling and from the clamping tool!

To avoid crushing and obvious injury, ensure that the product is held securely. Only use a blunt tool for clamping. Do not reach into the travel range of the driver during clamping and installation.



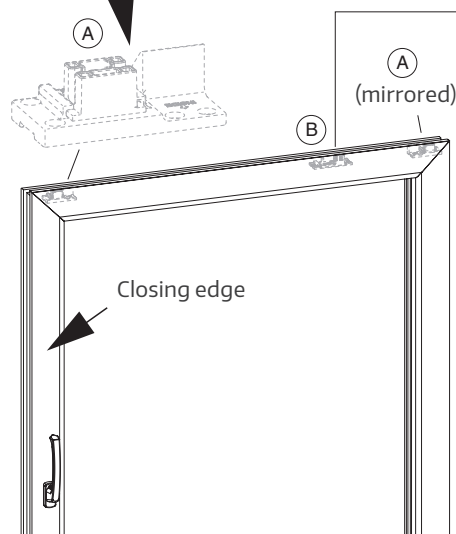
› Installation of the Comfort Close in the sash (the sash must not be inserted in the frame)



CAUTION

Do not pre-drill through the fastening holes of the Comfort Close!
This can result in material damage.

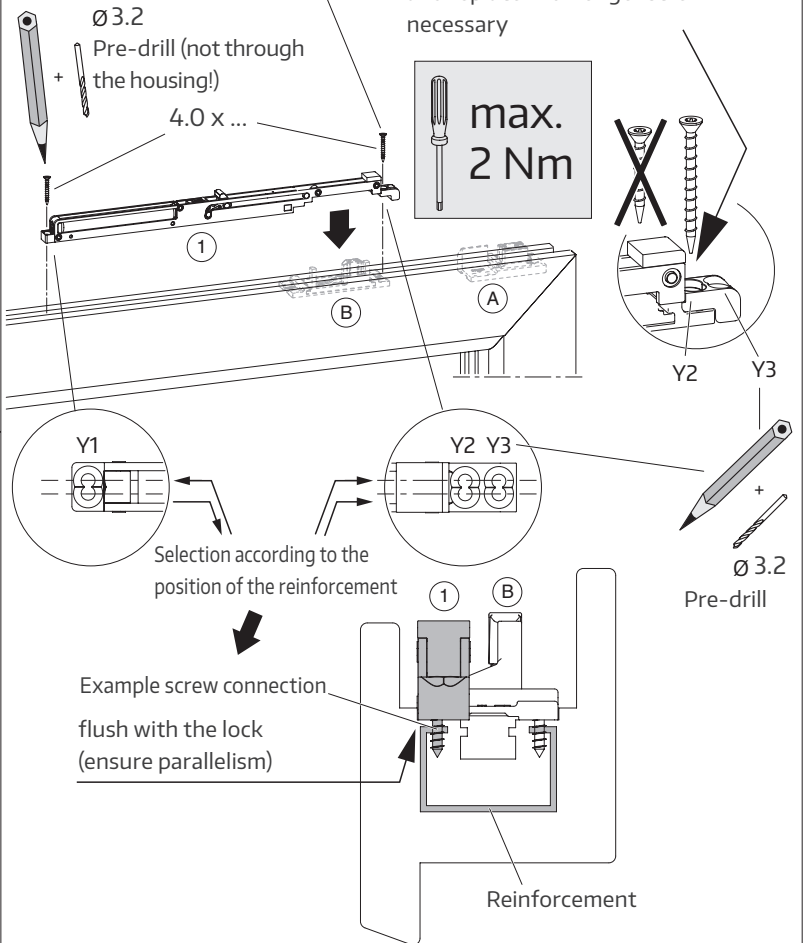
This guide must be replaced when retrofitting.
Otherwise, the function of the Comfort Close is not guaranteed.



Installation on the lock (B)

Select position for fastening:

Y2 or Y3; Pos. Y2: Unscrew screw from the lock and replace with longer screw if necessary



› Insert the sash into the frame (see profile-related installation instructions)



DANGER

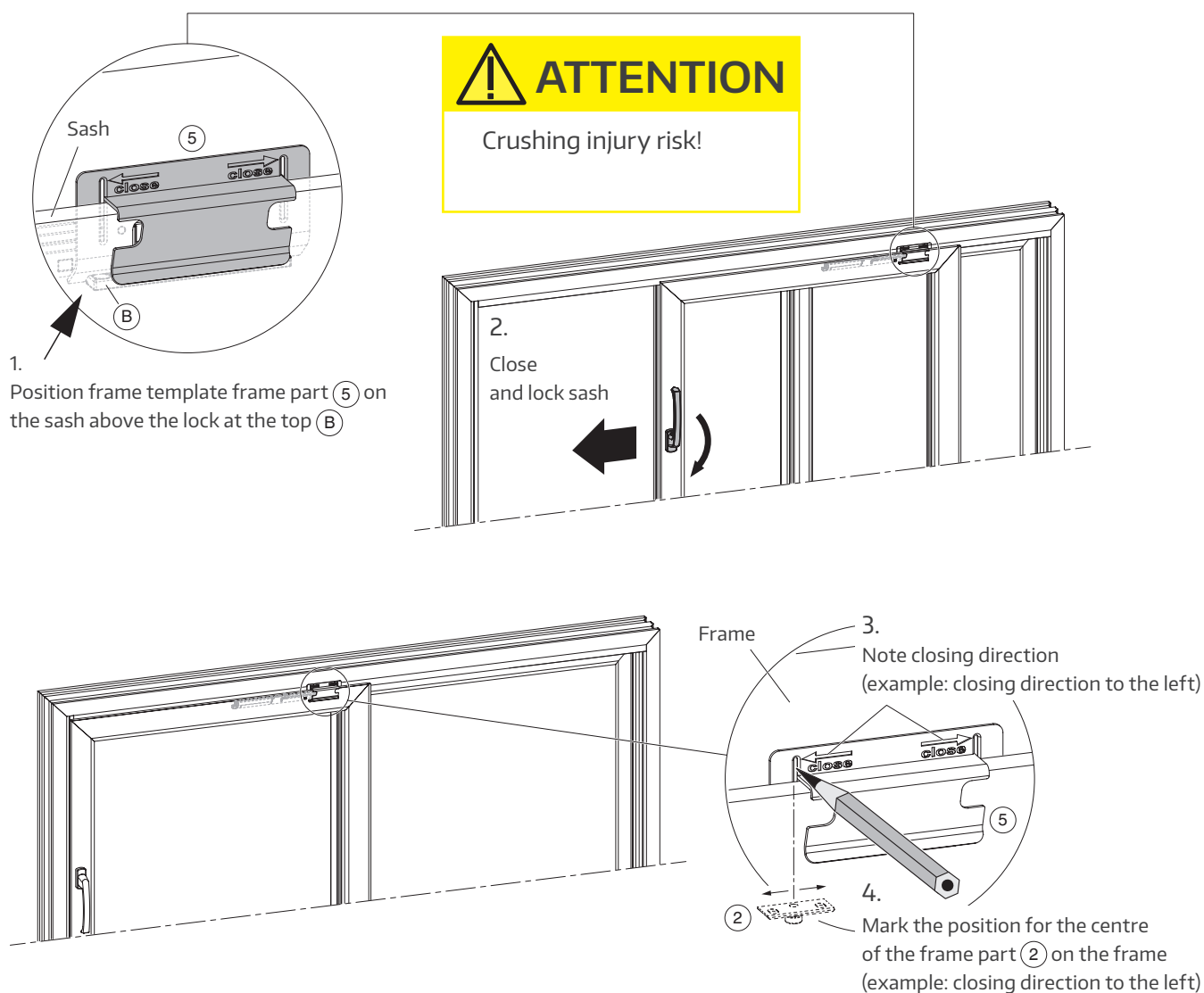
Mortal danger due to falling window sashes!

Risk of injury when lifting heavy weights!

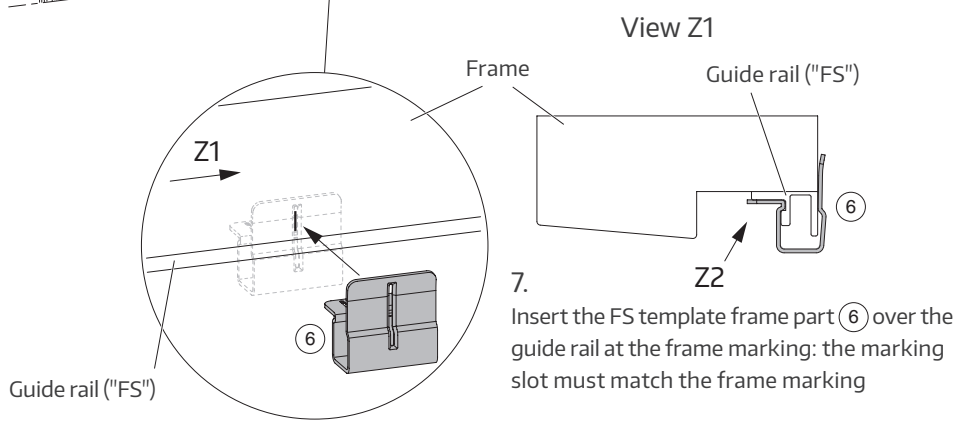
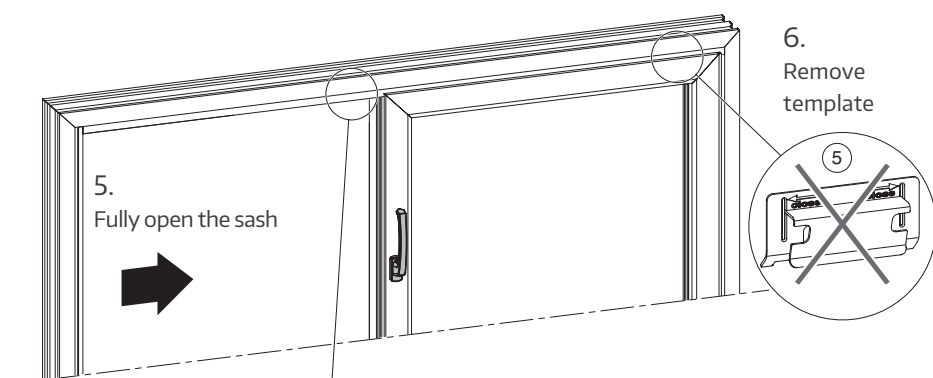
Window sashes may only be fitted and removed by specialist personnel!

Depending on the weight and size of the sash, it must be supported by several people or appropriate aids (lifting gear)!

› Installing the frame part

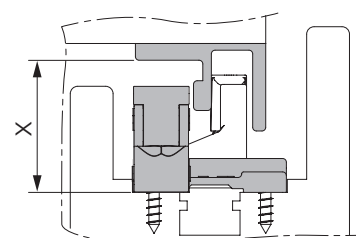


› Installing the frame part (cont.)



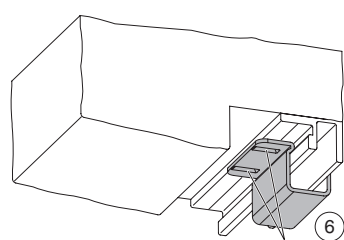
CAUTION

The sash must be glazed!

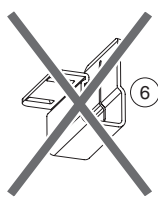


for $X > 35.5$ mm:
 $X1 = X - 35.5$ mm
 Use → (4)

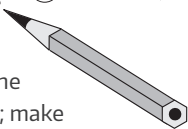
View Z2



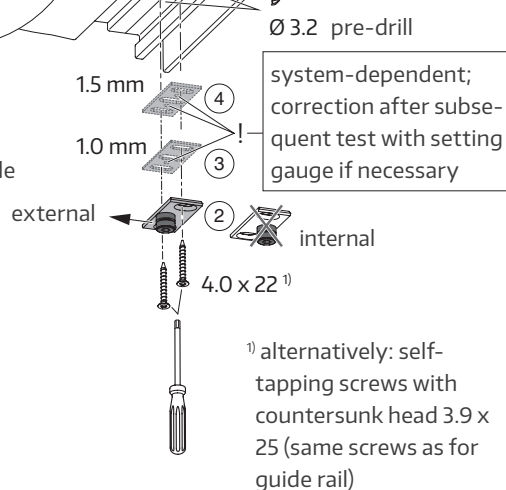
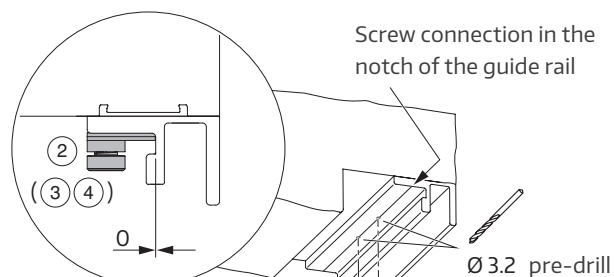
9. Remove template



8. Mark the screw points for the frame part on the guide rail; make sure that the template does not move



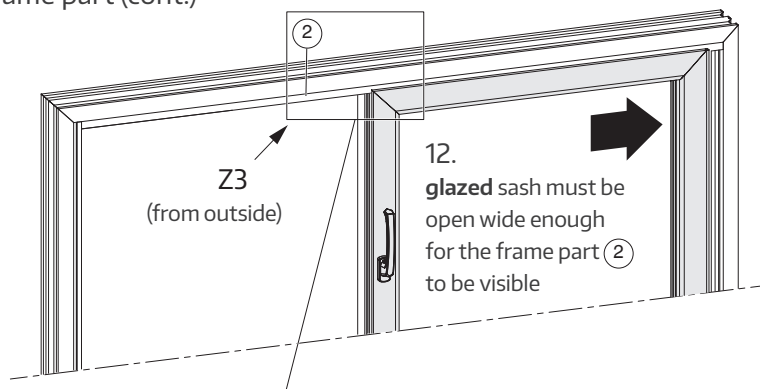
11. Fasten the frame part (2) (with shims if necessary (3)/(4)) using screws 4.0×22 ¹⁾ at the marked positions in the notch of the guide rail; the pin is facing outwards.



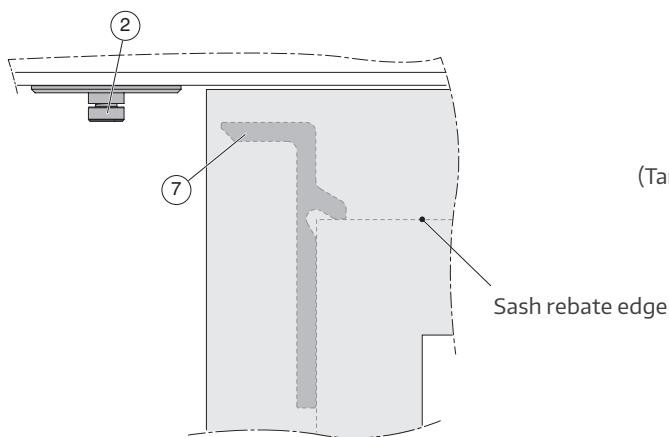
CAUTION

If the frame part is installed incorrectly, the function of the Comfort Close is not guaranteed.

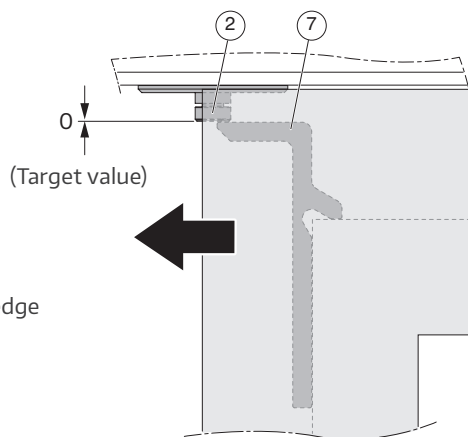
› Installing the frame part (cont.)



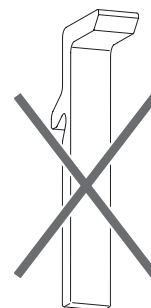
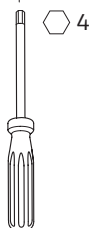
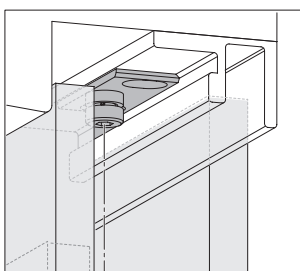
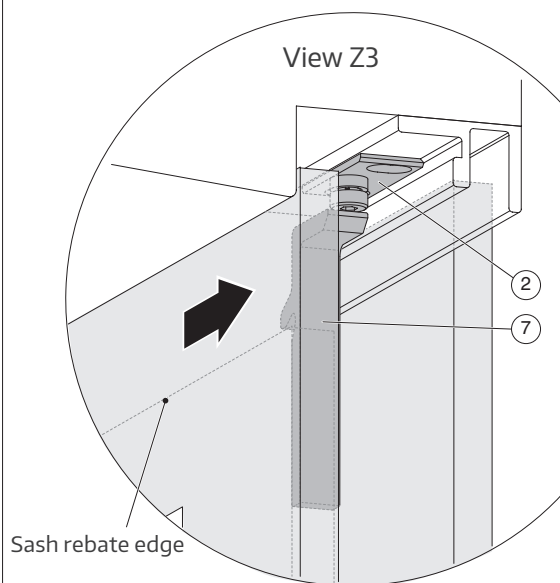
13.
Position the frame part ⑦ from the handle side on the sash rebate edge using the setting gauge



14.
carefully slide the glazed sash with the setting gauge to the pin of the frame part, adjust if necessary and check the target value



15.
for system-related lowering of the sash: set the target value by fine adjustment of the screw (see note);
add/remove shims on the frame part, if necessary (above fig.):
the number and thickness of the shims depend on the system



CAUTION

The screw can only be unscrewed to some extent and could fall out!

Installation of sash elements

This information must be forwarded to the installation company if necessary.

- › The standards and guidelines for the installation of sash elements in buildings must be observed to ensure that the function of a sash element is permanently guaranteed!
- › The fittings and the rebate spaces must be sufficiently ventilated - especially during the construction phase - so that they are not exposed to direct moisture or condensation. Protect the fitting from moisture and damp!
- › Keep all fitting parts and all rebates free of deposits and dirt (building dust, plaster, cement, etc.) to prevent damage to the fitting parts and to ensure optimum function. If necessary, the element should be covered.
- › When caulking, please observe Technical Guideline No. 3 of the glazing trade 'Caulking of glazing units'!
- › Coordinate the required fastening material with the structure, the material and the corresponding load and supplement it if necessary. Any fastening material supplied may only fulfil part of the requirements.
- › Test the sash and security elements before installation! Ensure the intactness and ease of movement of the elements.

Maintenance instructions

The Comfort Close is maintenance-free. It is recommended to check the setting dimension on the frame part during an inspection of the entire sliding element.

Troubleshooting

Problem	Possible cause	Problem solution
Sash unexpectedly hits an obstacle when sliding	The upper frame has dropped; the setting dimension deviates from the target value	Set the target value by fine adjustment of the screw on the frame part; if necessary, remove the shims on the frame part
Sash no longer brakes when closing	The sash has dropped; the frame part no longer engages in the Comfort Close	Set the target value by fine adjustment of the screw on the frame part; if necessary, add shims on the frame part

Storage, transport, disposal

Storage of fitting parts

Check the following immediately upon delivery:

- › Damage to packaging or cartridges
- › Damage to the material

Improper storage and transport of fitting parts can adversely affect the surface quality. To prevent this, please observe the following points:

- › It must be ensured that the room air is permanently dry.
- › Avoid large temperature fluctuations that lead to the formation of condensation. Condensation on fitting parts leads to the galvanised surfaces being attacked.
- › Aggressive vapours from cleaning agents or installation aids such as silicone and the like must be avoided at all costs - even for short periods. Vapours from such substances can very quickly lead to corrosion of fitting parts.
- › Salt-laden air or air polluted by trade and industry leads to corrosion on galvanised surfaces!

Storage and transport of window elements

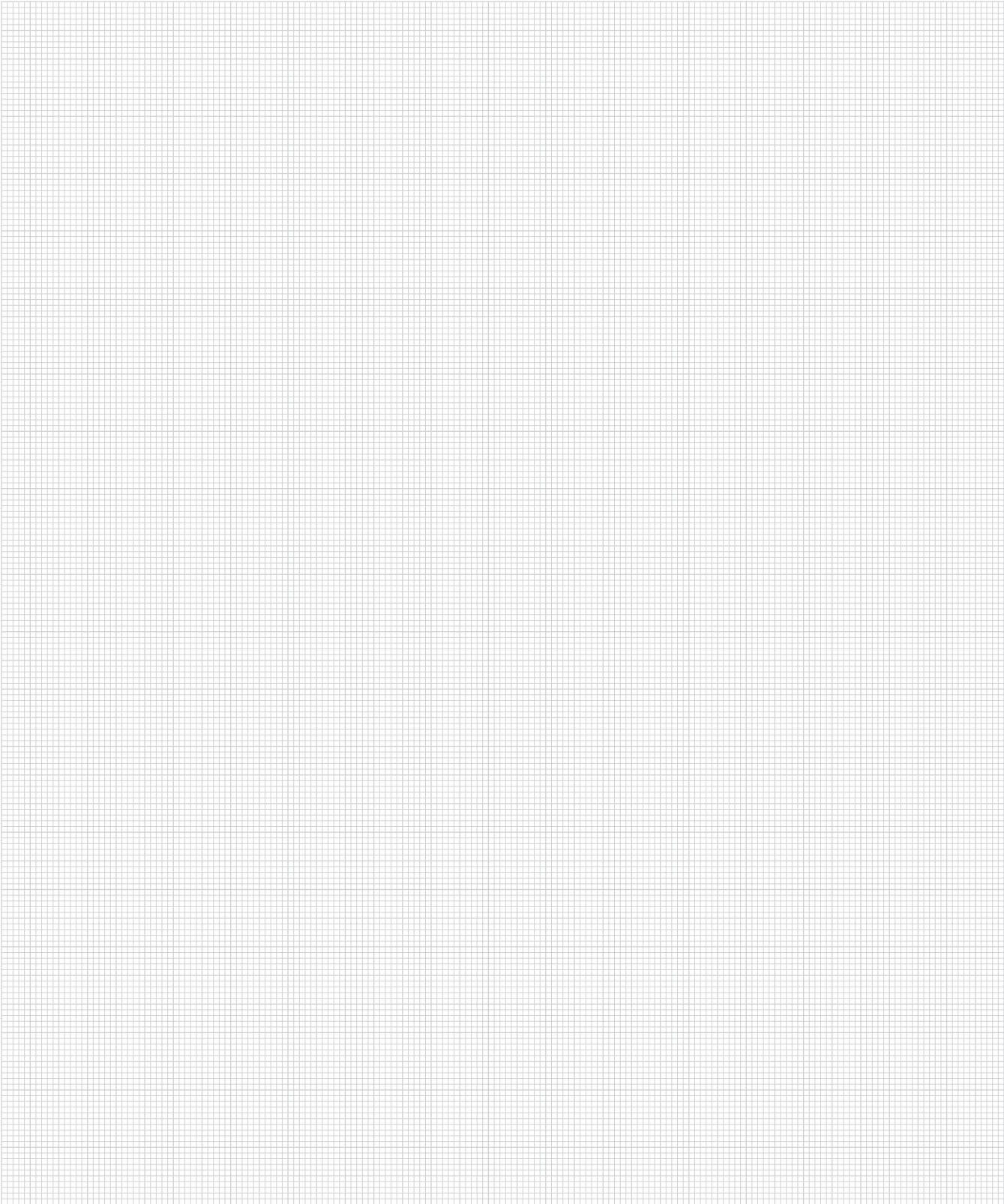
We recommend observing the information sheet TLE.01 Window + Facade Association (Verband Fenster + Fassade), which is available as a free download.

Disposal of window elements



The disposal of fitting parts must be carried out in accordance with local regulations and laws.

Notes



HAUTAU near you:

<https://www.hautau.de/kontakt>

HAUTAU GmbH
Wilhelm-Hautau-Strasse 2
31691 Helpsen, Germany
Tel.: +49 5724 393-0
Email: info@hautau.de
www.hautau.de



This document is constantly being revised.
You can find the current version at <https://webdoc.hautau.de/download/600007>
or scan the QR code.

Created: 08/2025
Document no. 510305
All rights reserved and subject to change.