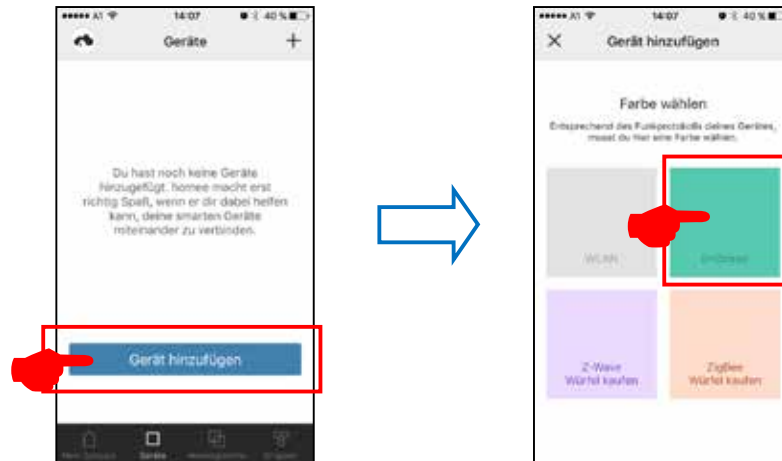


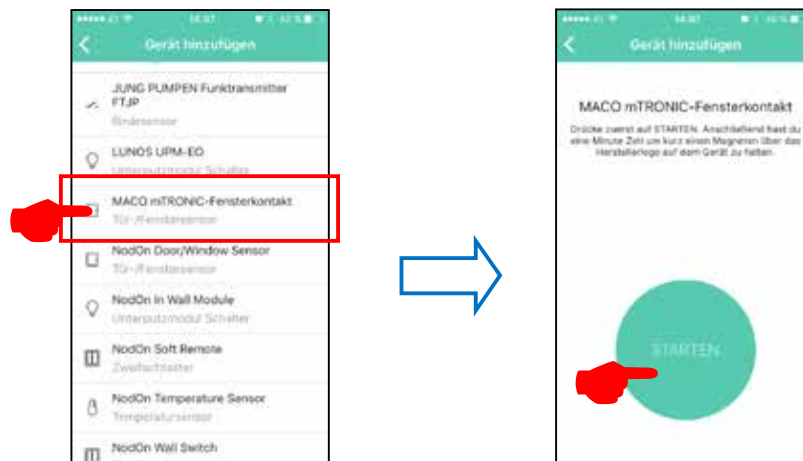


## Integration instructions - AFRISO gateway

- Install app.  
The version of AFRISO home gateway used must be 2.13 or higher.
- Start app and click the "Devices" function.
- Select "+" to add and click the "EnOcean" field.

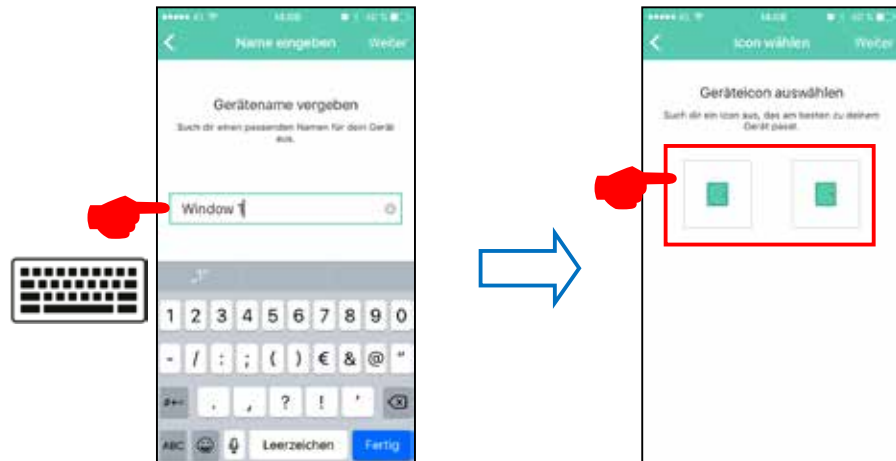


- Select "MACO mTRONIC window contact" and press "START".

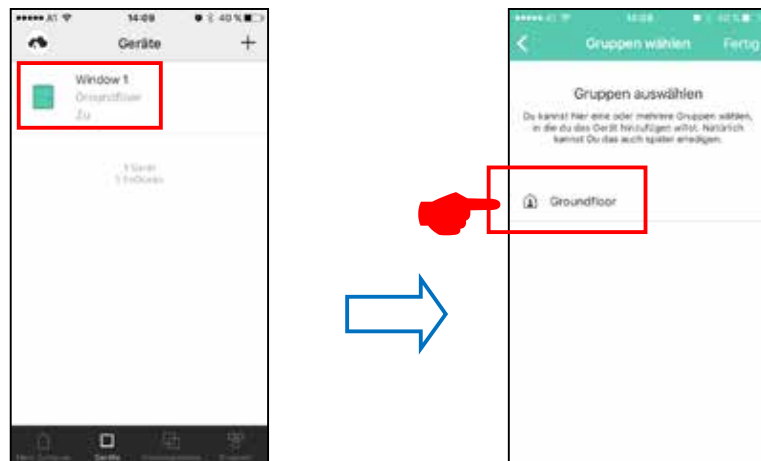




- Teach sensor (as per instructions = magnet via reed contact), sensor is detected → Assign name and icon.



- The sensor is displayed with designation, icon and status and must be assigned to a group.



Check sensor by operating the window. If status messages are incorrect, test the mode or the mounting position of the sensor.

