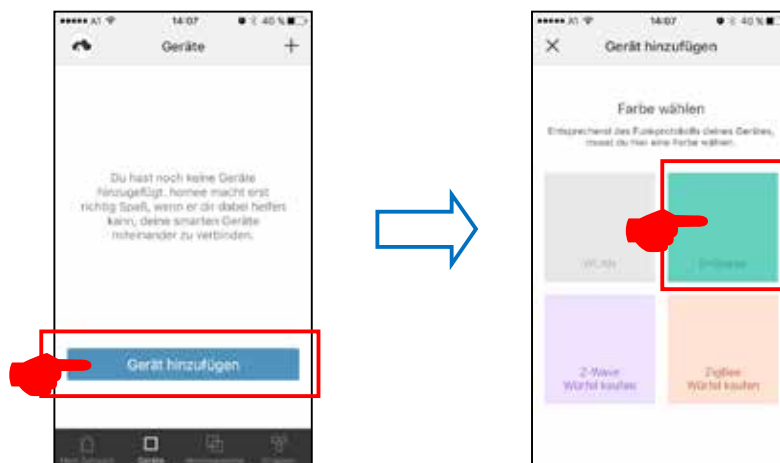


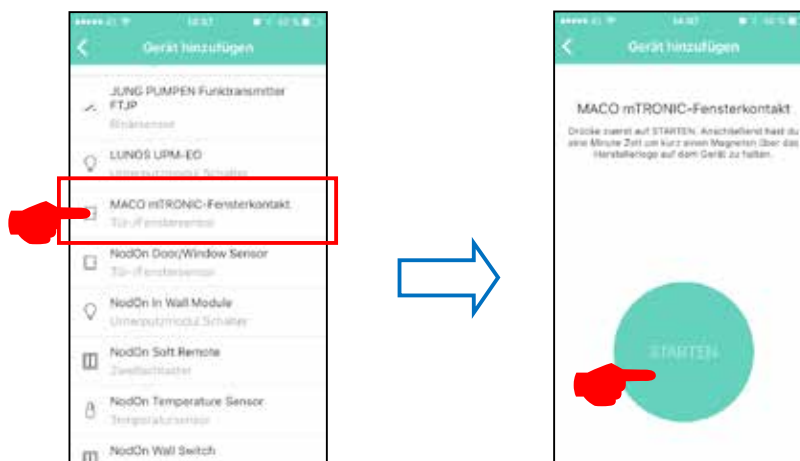
Integration Guide - AFRISO gateway



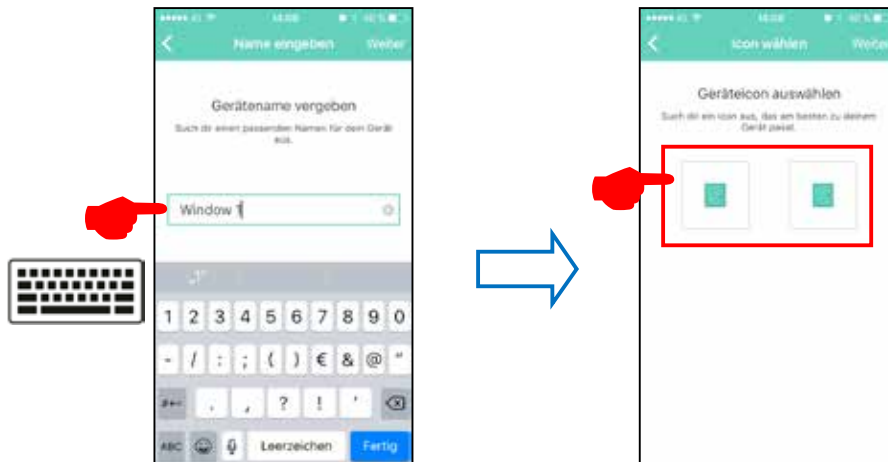
- › Install app.
The version of AFRISO home gateway used must be 2.13 or higher.
- › Start app and click the “**Devices**” function.
- › Select “+” to add and click the “**EnOcean**” field.



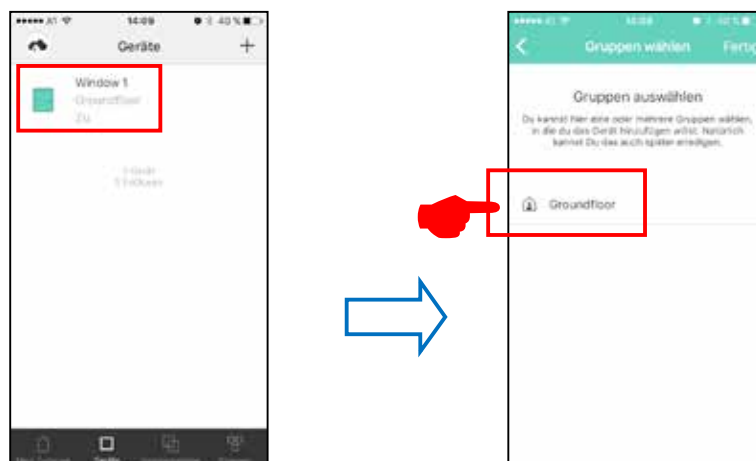
- › Select “**MACO mTronic window contact**” or “**MACO eTronic window contact**” and press “**START**”.



- › Teach sensor (as per instructions = magnet via reed contact resp. 3 times briefly press), sensor is detected → Assign name and icon.



- › The sensor is displayed with designation, icon and status and must be assigned to a group.



- › Check sensor by operating the window. If status messages are incorrect, test the mode or the mounting position of the sensor.

MACO near you:
www.maco.eu/contact



TECHNOLOGY IN MOTION



This print document is revised regularly.
 The latest version is available at <https://www.maco.eu/assets/759286>
 or scan the QR code.

Created: 02/2018 - Changed: 02.04.2021
 Order No. 759286
 All rights reserved and subject to change.